



shadowspec
umbrellas with distinction

SU4 TILTING OFFSET UMBRELLA



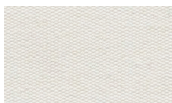
Features at a glance

- Marine grade aluminium frame and stainless steel hardware for longevity
- Elegant and simple to operate tilt system
- Rotates 360°
- Durable high performance hub and fittings
- Custom designed protection cover included

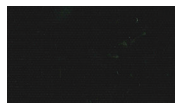
Canopy

- Commercial Grade: 100% solution dyed
- Maintenance: All fabrics can be washed and are replaceable
- Shade Rating: UPF 50+
- Colourfastness: 4/5
- Weight: 290 g/m²
- Waterproof Rating: >300mm water column

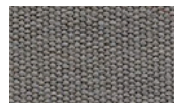
Stock Colours*



Egg Shell White



Black Widow



Boulder Grey

*other custom colours available on request.

Mounting Options

Surface Plate

For deck, patio and concrete mounting.



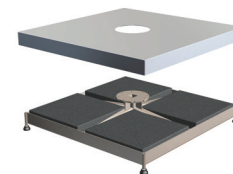
In-Ground Anchor

For mounting with a concrete footing.



Free-Standing Base + Aluminium Base Cover*

For complete customised maneuverability.



*Concrete Pavers are required for ballast (not supplied)
Castor Wheels are optional.

BEST-IN-CLASS WARRANTY

Relax easy knowing your outdoor umbrella purchase is protected by the industry's best warranty (conditions apply) and customer support.



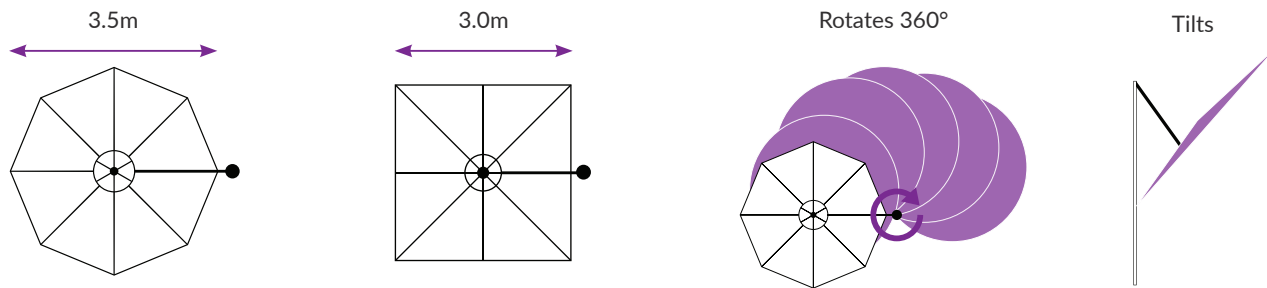
**Fabric
Warranty**



**Frame
Warranty**

TILTING OFFSET UMBRELLA

Size & Configuration



Umbrella Dimensions

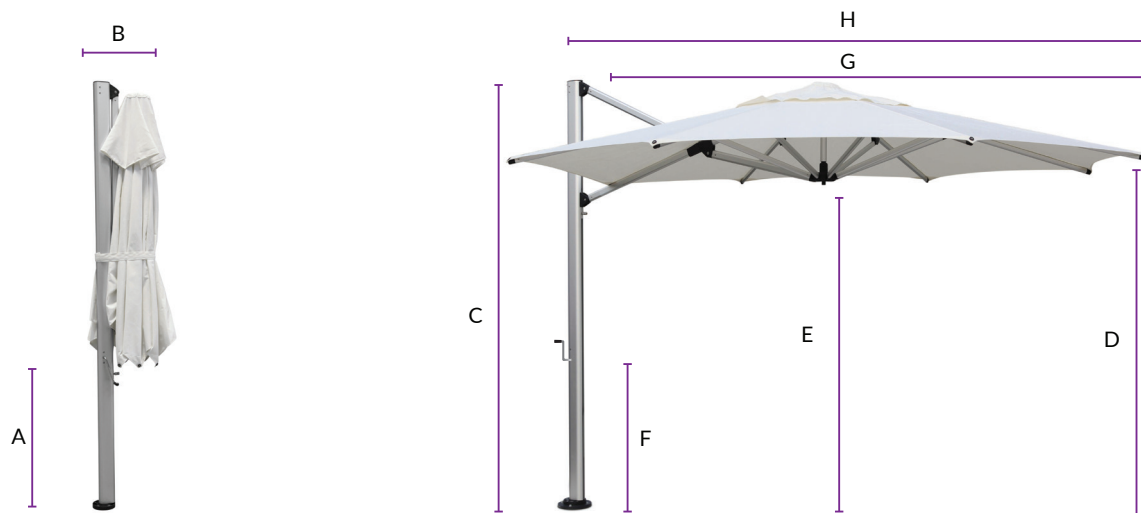


Diagram Legend

Label	Description
A	Clearance of Closed Strut Arms*
B	Depth of Umbrella When Closed
C	Overall Height*
D	Height to Edge of Canopy*
E	Height to Centre Hub*
F	Handle Height*
G	Canopy Width
H	Centre of Mast to Outside Edge of Canopy

3.5m Octagon

A	864mm
B	508mm
C	2718mm
D	2134mm
E	2032mm
F	889mm
G	3480mm
H	3582mm

3.0m Square

A	483mm
B	508mm
C	2744mm
D	2032mm
E	1931mm
F	889mm
G	2998mm
H	3353mm

*Free-Standing Base installations will add 177mm to the height and surface plates will add 12mm to the height. Adding Free-Standing Base wheels also will add a further 45-80mm. All sizings are approximate only and subject to change without notice.

